

Cabinet Member for Adult Social Care and Integration Agenda

Date: Monday, 6th November, 2017
Time: 10.30 am
Venue: Committee Suite 1 & 2, Westfields, Middlewich Road,
Sandbach CW11 1HZ

The agenda is divided into 2 parts. Part 1 is taken in the presence of the public and press. Part 2 items will be considered in the absence of the public and press for the reasons indicated on the agenda and at the foot of each report.

It should be noted that Part 1 items of Cheshire East Council decision making and Overview and Scrutiny meetings are audio recorded and the recordings will be uploaded to the Council's website.

PART 1 – MATTERS TO BE CONSIDERED WITH THE PUBLIC AND PRESS PRESENT

1. Apologies for Absence

To receive any apologies for absence.

2. Declarations of Interest

To provide an opportunity for Members and Officers to declare any disclosable pecuniary and non-pecuniary interests in any item on the agenda.

For requests for further information

Contact: Gaynor Hawthornthwaite

Tel: 01270 686467

E-Mail: gaynor.hawthornthwaite@cheshireeast.gov.uk with any apologies

3. **Public Speaking Time/Open Session**

In accordance with Procedure Rules Nos.11 and 35 a period of 10 minutes is allocated for members of the public to address the meeting on any matter relevant to the work of the body in question. Individual members of the public may speak for up to 5 minutes but the Chairman or person presiding will decide how the period of time allocated for public speaking will be apportioned where there are a number of speakers. Members of the public are not required to give notice to use this facility. However, as a matter of courtesy, a period of 24 hours' notice is encouraged.

Members of the public wishing to ask a question at the meeting should provide at least three clear working days' notice in writing and should include the question with that notice. This will enable an informed answer to be given.

4. **Connected Community Centre Social Franchise Applications Round 2**
(Pages 3 - 18)

To consider a report to determine the award of social franchisee status to seven applicants which meet the criteria approved by Cheshire East Council.

Cheshire East Council

Cabinet Member for Adult Social Care and Integration

Date of Meeting: 06 November 2017

Report of: Director of Public Health

Subject/Title: Social Franchise Award Round 2 – Connected Communities Centres

Portfolio Holder: Councillor Janet Clowes

1. Report Summary

- 1.1. This report is to determine the award of social franchisee status to seven applicants which meet the criteria approved by Cheshire East Council.
- 1.2. The report covers the second round of grants for 2017/18 in line with Cheshire East Council's revised Social Franchise Model. There are a total of 7 grants recommended to be awarded.

2. Recommendation

- 2.1. To award the Connected Communities Centre social franchise to the following:
 - Beechmere Extracare Village - Crewe
 - The Georges Community Centre, The Wishing Well Project - Crewe
 - TS Ambuscade - Crewe
 - St Andrews Parish Hall - Crewe
 - Belong - Crewe
 - Poynton Civic Hall – Poynton
 - Church of the Resurrection - Broken Cross and Upton Priory
- 2.2. To award a grant of a maximum of £5,000 over 2 years to reserve the use of facilities for the delivery of early intervention and prevention services.

3. Other Options Considered

- 3.1. The proposed organisations have been selected by local neighbourhood partnerships made up of key stakeholders in that locality. No other appropriate venues in these locality applied to be considered for franchise status. An evaluation process is in place if more than one organisation express interest in becoming a Connected Communities Centre within a identified priority location (Appendix 1, page 8).

4. Reasons for Recommendation

- 4.1. The venues stated in 2.1, with support from their local network / neighbourhood partnerships, have agreed to become a Connected Communities Centre and adhere to the criteria set out in the revised social franchise model (Appendix 1).
- 4.2. The way in which the individual grants are spent will be determined by the local partnership to ensure that local priorities are being tackled through the most appropriate and effective early intervention and prevention services available.

5. Background/Chronology

- 5.1. The Cabinet Member for Communities approved a pilot social franchise model for Community Hubs on the 20th July 2015. A model was adopted and monitored for development.
- 5.2. Cabinet agreed to a set of changes based on learning from the pilot franchise model in the Connected to Services report on 8th March 2017.
- 5.3. Detailed amendments to the franchise model were then approved by the portfolio holder for Finance and Communities on 11th July 2017.
- 5.4. The following venues have agreed to adhere to all of the criteria, offer and expectations and completed applications set out in Appendix 1:
 - Beechmere Extracare Village - Crewe
 - The Georges Community Centre, The Wishing Well Project - Crewe
 - TS Ambuscade - Crewe
 - St Andrews Parish Hall - Crewe
 - Belong - Crewe
 - Poynton Civic Hall – Poynton
 - Church of the Resurrection - Broken Cross and Upton Priory
- 5.5. The grants are for 2 years only and within that time the Council will be supporting the Connected Communities Centres to establish sustainable funds and activities to continue to provide local residents with a range of priority tackling services.
- 5.6. About the venues:

Beechmere Extracare Village:

This venue lies in the heart of the St Barnabas ward of Crewe in a neighbourhood of multiple deprivation, including many health inequalities. The venue is well connected to local transport links, connected to a range of services including a doctor's surgery. This accessible modern venue regularly hosts various health and social events and houses a number of services and wants to continue to do so as a Connected Communities Centre.

The Georges Community Centre:

This venue is closely aligned to Jubilee House which was agreed as a Connected Community Centre by Cheshire East Council on 11th July. This venue is also managed by Wishing Well who have provided an extensive range of services for over a decade. The Georges is recognised locally to be a one stop shop for services and Wishing Well are forward thinking as to how they can evolve working with Cheshire East Council as a Connected Communities Centre.

TS Ambuscade:

This is a large MOD building, situated in Crewe East that is only used 3 evenings per week. Officers at Ambuscade are very keen for this site to be used as a community venue during the day and weekends to offer local services to those who need it. Currently 28% of children are living in poverty in this ward whilst having the worst education attainment in Cheshire East with only 45.3% of young people obtaining 5 or more GCSE's. It therefore makes sense for this building to host a range of services. This is an excellent opportunity to utilise a resource that sits empty during the day but could be used to provide intervention and preventative services to tackle local priorities by becoming a Connected Communities Centre.

St Andrews Parish Hall:

This venue is in the South Ward of Crewe and would make an excellent, vibrant and engaged Connected Communities Centre. Parts of Crewe South are recognised as being in the top 10% of areas nationally for deprivation. It has the most ethnically diverse population in the Borough with up to 25 different languages being spoken by its residents. It is therefore vital that services and outreach are community focused and fully embedded, speaking to each resident in a way that meets their needs and embraces their lifestyle and culture. This venue is managed by and committed to the local community already housing many services and has the capacity for more services to be delivered.

Belong:

This venue is in the South Ward of Crewe and aims to compliment the work they already do in relation to Dementia to serve the local community. They are passionate about helping and supporting not only older people and those living with a dementia, but extending this to their friends and loved ones too. Social isolation and health and wellbeing go hand in hand and with the extensive programme of activities and events, together with functional venues throughout the building, Belong can offer a solution to decrease isolation in the community, increase fitness and mobility through activities and fully utilise existing partnerships they have such as Cheshire Dance, Deafness Support Network. Community is at the heart of everything they do and they would be an ideal Connected Community Centre in the area.

Poynton Civic Hall:

Poynton is a town with a population that is recognised as housing above the national average number of older people. Poynton Civic Centre is in the heart of the town and the community with a designated information point and staffed reception. It is ideally situated next to a GP practice, library and supermarket. Services delivered in the building currently include: a lunch club for those living with dementia, falls prevention and fitness classes, and University of the Third Age. The centre also operates a scheme hiring mobility scooters to residents and visitors. There are also many activities for young children such as rhyme time and baby massage classes. Whilst the five modern rooms for hire are well utilised the organisation is committed and passionate for other services to be delivered from this venue to address the needs of the population.

Church of the Resurrection:

The Church of the Resurrection was founded in 1964 as a chapel to St Peter's but in 1975 it became the district church for parts of the civil parishes of Macclesfield and Prestbury. Recent investment in the building now means the residents of Upton Priory have a multi-purpose venue; the hall has been designed for local residents and groups to utilise and host events. Becoming a Connected Community Centre will allow the venue to reach out to local people and accommodate more services.

6. Wards Affected and Local Ward Members

- 6.1. Crewe St Barnabas, Crewe North, Crewe East, Crewe South, Poynton East and Pott Shrigley and Macclesfield Broken Cross And Upton Ward for proposed Connected Communities Centres.

7. Risk Management & Implications of Recommendation

7.1. Policy Implications

Procurement policies will be adhered too in relation to the financial payment.

7.2. Legal Implications

The Council has the power to award grants to organisations using its general power of competence in section 1 of the Localism Act 2011. In exercising the power the Council must satisfy its public law duties. In essence this means that in making the decision the Council must have taken into account only relevant considerations, followed procedural requirements, acted for proper motives and not acted unreasonably. An application process is a clear statement of the criteria that the Council is applying and is essential if the Council is to defend any challenge to its decision making process.

Franchises and grants to reserve the use of facilities for the delivery of early intervention and prevention services are being awarded to defined

organisations following an application process and against set criteria. By entering into a formal grant agreement with the Council the organisations activity can be monitored and required to report back to the Council upon their compliance with the franchise requirements and expenditure of the grant. The decision making process was delegated to the Portfolio Holder in order to ensure that decisions can be made expeditiously and at the appropriate level.

Grant funding to organisations based on the application of the Council's published scheme satisfies the Council's public law duties.

7.3. Financial Implications

The £5,000 grant payment will be made in four singular £1,250 payments, paid in advance made over two years to each of the seven proposed franchisees. A grant offer agreement will be used which will allow Cheshire East to recover funds if necessary, this will be funded from the Connected Communities Centres reserves which were approved as part of the Connected Communities Strategy by Cabinet on 8th November 2016. This will amount to £17,500 per year for two years equating to £35,000. There is sufficient funding in this earmarked reserve for up to 30 Connected Community Centres.

7.4. Equality Implications

Application has been open to all asset owners in 25 Connected Communities identified priority areas of deprivation.

7.5. Rural Community Implications

Not all rural areas can be offered this support as the resource needs to concentrate initially on the in Connected Community identified priority locations including the top 25% areas of deprivation.

7.6. Public Health Implications

The seven proposed Connected Communities Centres will be the flagship venues for public health service delivery in communities. The consideration of these venues in future commissioned contracts as delivery points to achieve outcomes will be of benefit to local hard to reach residents, achieving a greater reach and assisting with outcomes for the commissioned providers.

7.7. Risk Management

All risks will be mitigated through continuous monitoring of the franchise model.

8. Access to Information

- 8.1. Revised Social Franchise model application form that outlines offer and expectations (Appendix 1).

9. Contact Information

Contact details for this report are as follows:-

Name: Dan Coyne

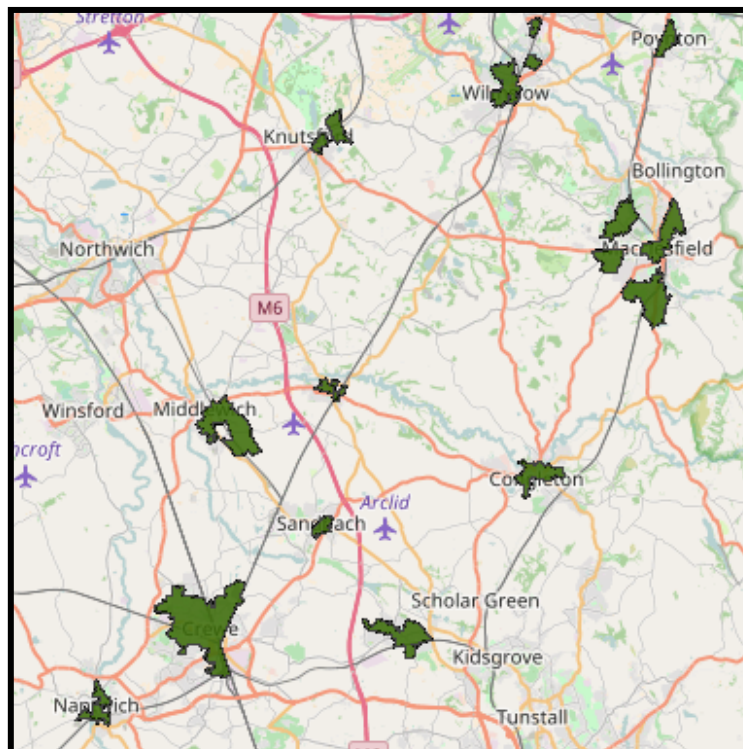
Designation: Delivering Differently Manager - Partnerships and Communities

Tel. No. 01625 383845

Email: Daniel.coyne@cheshireeast.gov.uk

Connected Community Centre

Application Form





Aim

Cheshire East Council through the Connected Communities strategy are wanting to develop stronger relationships with local partners and asset owners in to ensure the right services are delivered at the right place at the right time to the right people. To do this we have developed a social franchise model which will enable a mechanism to work together and be driven by social goals.

Working together under the Connected Community branding, the aim will be to implement a shared vision in identified areas of deprivation.

The key principles to this vision are as follows:

1. To work in collaboration

Working closer with other organisations to provide a streamlined service to residents

2. To tackle local priorities

Using local knowledge, understanding what the real needs of the local area are

3. To support and develop resident led initiatives

Work with residents and key stakeholders to identify gaps and initiate new projects

4. To coordinate service delivery

To ensure a range of services are delivered from a range of areas

A local neighbourhood partnership has been established in each of the Connected Community identified priority areas of deprivation. The neighbourhood partnership is made up of various local key stakeholders.

Your venue has been proposed by the local neighbourhood partnership (add partnership name) to be the Connected Community Centre for the locality covering (add ward or locality the venue will cover)

By agreeing to become a Connected Community Centre you will be agreeing to adhere to the offer and expectations outlined below.

Offer

- Provided with Connected Community Centre signage
- Provided with a secured tablet that will have access to a local directory of services (tablet cannot be replaced by Cheshire East if damaged free of cost)
- Funded given for up to two years for usage of 5 hours of room hire per week (based on £10 per hour) for the delivery of priority issue tackling services (which will be decided by (add partnership name). The 5 hours could be taken on average dependent of availability and service requirements for example 20 hours over 4 weeks. See room hire funding agreement below for more information.
- An open day (show case of services) will be arranged from your venue to inform the community what services could be delivered



- An invitation to a biannual conference to allow networking between franchisees
- Long term we want your asset to become the flagship venue for service delivery in the footprint you are located within, we will be working with commissioners and providers with aim for you and the neighbourhood partnership to be communicated with when contracts/opportunities become available.
- Opportunity to network with other connected community centres and connected community network member through a biannual conference

Room hire funding agreement

The full two year offer will be dependant on Cheshire East Council signing off by March 2018. The funding will be paid every 6 months in advance. The funding will be for a maximum of 50 weeks per annum. The 5 hours usage will be decided by the neighbourhood partnership and will be paid regardless of the room being occupied.

Expectation

- To agree to a room hire charge in relation to the room hire funding agreement of £10 per hour for 5 hours a week
- A minimum of 5 hours per week availability for the delivery of new services
- Be open to have a further range of services be delivered from your venue (at your normal room hire charge)
- To become an active member of the local neighbourhood partnership
- Complete the *GRIPPP assurance tool
- Ensure Connected Community Centre signage is visible to local residents
- To have WIFI
- To install signage and a secure tablet stand (kiosk) in an accessible area of the building
- Agree annual review

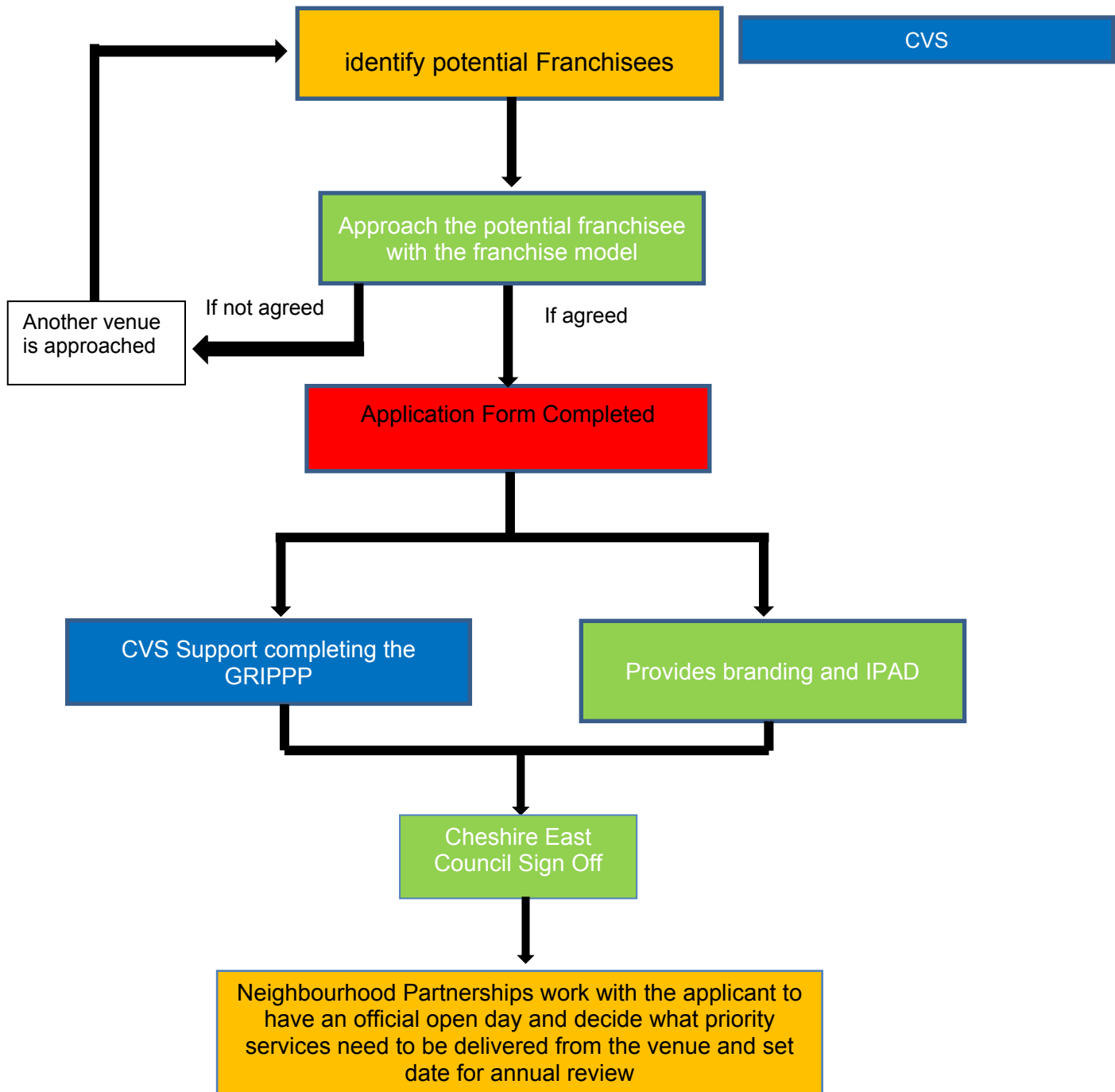
*GRIPPP – A quality mark to ensure the appropriate governance is in place for the building and the delivery of services. Support to complete and externally validated by CVS



Connected Community Identified Priority Areas of Deprivation

No.	Locality	Please tick
1	Macclesfield South Ward	
2	Macclesfield Weston and Ivy	
3	Macclesfield Upton	
4	Macclesfield Town Centre	
5	Macclesfield Hurdsfield	
6	Poynton	
7	Wilmslow	
8	Colshaw Farm	
9	Spath Lane	
10	Knutsford	
11	Longridge	
12	Holmes Chapel	
13	Congleton	
14	Bromley Farm	
15	Alsager	
16	Radway Estate	
17	Sandbach	
18	Middlewich	
19	Cledford	
20/21	Crewe North	
22/23	Crewe East	
24/25	Crewe West	
26/27	Crewe Central	
28	Crewe South (a) Gresty	
29	Crewe South (b) Westminster	
30	Nantwich	

FRANCHISE APPLICATION PROCESS FLOWCHART





Please complete the below information if you would like to proceed to become a Connected Community Centre

1. Main contact details:	
Name:	
Address:	
Post code:	
Tel No:	Email:

2. Organisation/Venue:	
Organisation/Venue Name:	
Organisation/Venue Address:	
Post code:	

3. Type of Organisation:		
Type	Please tick all that apply	Registration Number / Article of Association (if applicable)
Church Council		
Community interest Company		
Community Group		
Registered Charity		
Social Enterprise		



Other – please detail		
-----------------------	--	--

<p>4. What interests you in becoming a Connected Community Centre</p> <p>Please briefly describe why you want franchise status and how it will benefit your neighbourhood</p> <p>How you will tailor Services based on local needs.</p>
<div></div>



Criteria	Evidence provided	Date signed off
Be open to have a range of services be delivered from your venue (at your normal room hire charge)		
To become an active member of the local neighbourhood partnership		
Complete the GRIPPP assurance tool or supply information relating to an *equivalent accreditation		
Ensure Connected Community Centre signage is visible to local residents		
Agree annual review		

*equivalent accreditation list – **ISO9001, Investors in people**

Signed on behalf of Franchisee:

Position within Organisation:

Date:

Signed on behalf of Cheshire East :

Position within Organisation:

Date:

Please send your completed form:

By Email: Partnerships@cheshireeast.gov.uk



By Post: Community Hub Franchise, Partnerships & Communities Team, c/o
Municipal Buildings, Earle Street.

This page is intentionally left blank